



CHARLOTTE, NC 28211 · COTSWOLD · NEW CONSTRUCTION

# 4110 *Melchor* Avenue

OFFERED AT

## \$3,950,000

BED	BATH	SQ FT	GARAGE
5	5.5	5,939	3-Car

*Scandinavian Modern · Designed for Living, Built for Life*

# A home unlike anything in *Charlotte*.



4110 Melchor Avenue is not a home that happened quickly. It was conceived over months of deliberate thought — a study in what it truly means to blend architectural heritage with contemporary living. The result is something Charlotte hasn't seen before: a Scandinavian Modern home that feels both ancient and utterly of the moment.

The exterior sets the tone immediately. Natural stone rises in the tradition of old-world Nordic craftsmanship, meeting warm vertical cedar siding that adds depth and character. Aluminum clad windows with steel-dark frames complete an elevation that is dramatic without being loud. This is a home that earns a second look.

---

*"It took months to design and create an aesthetic that blends old-world Scandinavian style with today's modern elegance. The result is something we believe will stand as one of the finest homes we've ever built."*

---

Step inside and nearly 6,000 square feet unfolds with the kind of generosity that makes everyday life feel effortless. Every room was designed with both scale and warmth in mind — because a beautiful home should also be a livable one.

## The Chef's Kitchen

A sprawling open kitchen featuring a large white oak and quartz island with seating for four, black and gold cone pendants, and a view straight through to the dining room. The scullery — visible and fully equipped with sage green cabinetry, beverage fridge, and panel dishwasher — keeps the main kitchen pristine for entertaining.

## Primary Spa Suite

A stunning 22' spa bath featuring a freestanding soaking tub with champagne bronze wall-mount fixtures, a full-height dark zellige brick accent wall behind dual oak vanities, hexagon marble flooring, and a glass-enclosed shower wrapped in handmade blue-gray subway tile. The sculptural bead pendant chandelier anchors the space.

## Outdoor Living Room

Nearly 800 square feet of covered outdoor living behind the home — flagstone floors, cedar plank ceilings, phantom screens that vanish when open. Two distinct zones: a seating area with natural stone fireplace and a full outdoor kitchen with professional appliances. This is a true outdoor room.

## Artisan Details Throughout

In-floor foyer lighting. Copper gutters. Curated room-by-room lighting from brass halo chandeliers to cascading orb fixtures. These are the details that elevate a home from luxury to extraordinary.

## Designed for Real Life

An oversized mudroom, dedicated dog wash station in the 1-car garage, and a puppy dining area with wall-mount pot filler. Because truly thoughtful design accounts for every member of the family.

THE HOME

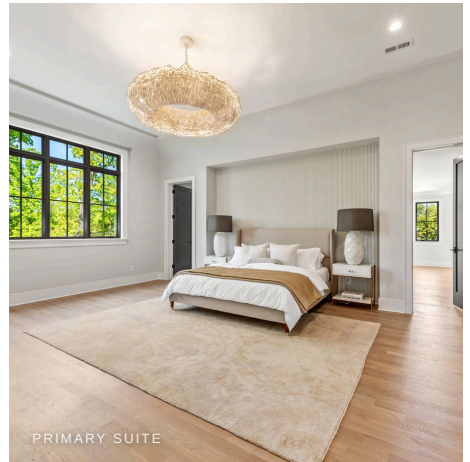
# Inside 4110 Melchor.



CHEF'S KITCHEN



DINING ROOM & BAR



PRIMARY SUITE



PRIMARY SPA BATH



DUAL VANITY & SHOWER



REAR ELEVATION



OUTDOOR LIVING



OUTDOOR KITCHEN & DINING

# Why Pike Properties *is different.*

17

YEARS BUILDING

8–10

HOMES PER YEAR

6

PERSON TEAM

10mi

FROM CENTER CITY

Most builders build homes. We build something closer to a standard we'd hold ourselves to if we were the ones moving in. That distinction matters — because it changes every decision we make from the moment we acquire a lot to the day we hand over the keys.

We are a small team of six — and that's entirely by design. Every homesite is purchased directly from sellers, funded by us, designed architecturally by us, finished with interior selections made personally by our team, and sold through our own brokerage. From the first sketch to closing day, there are no layers between our vision and what gets built.

We've been building this way in a focused 10–15 minute radius from Center City Charlotte since 2008 — intentionally staying small so that we never lose the quality and personal attention that defines our work.

*"We don't just add a sizzle feature unless it makes sense. It must be intentional and have a purpose."*

When you tour a Pike Properties home alongside others in the market, the difference tends to speak for itself. Not in a showy way — we don't believe in excess for its own sake. But in the quality of every surface, the logic of every layout decision, and the craftsmanship that's evident in every detail you touch.

We obsess over details because they matter to us personally. We don't waste space. When there's an opportunity to upgrade something — regardless of cost — we often take it. Because the people who purchase our homes aren't simply buying a house. They're acquiring our work of art.

#### Vertically Integrated

Land acquisition, funding, architecture, interior design, and sales — all handled in-house by the same six-person team.

#### Intentional Design

We blend old-world styles with new design to create homes that inspire lasting excitement — not just on move-in day.

#### Focused Market

We build 8–10 homes per year in a curated Charlotte market. We never grow beyond what our standards can sustain.

#### No Compromise

If there's an opportunity to do something better — even if it costs more — we do it. Every time.

# Every detail, *documented.*

BEDROOMS	BATHROOMS	SQUARE FEET	GARAGE	COVERED PORCH
5	5.5	5,939	3-Car	791 SF

## Kitchen Appliances

JennAir Noir 6-burner range + griddle, panel-ready refrigerator, microwave drawer

## Kitchen Plumbing

Fireclay farmhouse sink, brass pot filler, Scullery with beverage fridge + panel dishwasher

## Primary Bath

Freestanding soaking tub, 22' × 12'10" spa bath, rainfall shower, champagne bronze fixtures

## Primary Closet

22'6" × 13'0" walk-in, custom built-ins

## Outdoor Living

41'6" × 19' covered rear porch with phantom screens

## Lighting — Foyer

Sculptural folded-brass geometric pendant, in-floor lighting

## Lighting — Family Room

Brass halo ring chandelier, linear bar sconce

## Lighting — Dining

Cascading white orb chandelier, brass wall-mount art light

## Lighting — Primary

Ruffled leaf-petal drum chandelier, bead onion pendant in bath

## Exterior

Natural stone facade, vertical cedar siding, copper gutters, aluminum clad windows

## Bonus Room

23'6" × 18'6" — media, fitness, or flex use

## Loft

11'4" × 17'4" open flex space

## Office / Bedroom 5

Main-floor, 13'10" × 13'8", globe pendant, full bath adjacent

## Mudroom

17'4" × 8'10", built-in storage, connects from garage

## Pet Features

Dog wash station in 1-car garage, puppy dining area with wall-mount pot filler

## Bathroom Finishes

Each bath individually designed — oak vanities, champagne brass, matte black options

## Laundry

Upper level, 7'6" × 17'4", utility faucet, D/W included

## Neighborhood

Cotswold · SouthPark 8 min · Uptown 12 min · Airport 22 min

# Schedule a Private *Showing*

*"To us, they're not getting another house. They're truly purchasing our work of art."*

We built 4110 Melchor the way we'd want a home built for ourselves. Every fixture selected because it was the right one — not the convenient one. Every room proportioned to feel generous without waste. Every material chosen for how it will look not just on day one, but ten years from now.

This home is the result of months of architectural design, interior design, and the kind of hands-on craftsmanship that only comes from a small team that genuinely cares. We invite you to come experience it in person.

*Designed for Living, Built for Life.*

#### ADDRESS

**4110 Melchor Ave**  
Charlotte, NC 28211 · Cotswold

#### PRICE

**\$3,950,000**  
5 BD · 5.5 BA · 5,939 SF · 3-Car Garage

#### PHONE

**704.332.3332**

#### WEB

**4110melchor.com**  
Full listing · AI concierge · Floor plans

#### BROKERAGE

**Pike Properties**  
1805 East Blvd, Suite 100 · Charlotte,  
NC 28203  
pikeproperties.com · Est. 2008