

1106 ROSEWOOD CIR.

5 BEDROOMS | 4.5+ BATHROOMS | 4,950 SQ FT



PIKE

PROPERTIES



- Think Studio McGee meets Pike Properties with this European Farmhouse stunner set on close to half an acre on a private and serene Cotswold cul-de-sac street.
- Indoor/outdoor living defines the lifestyle of residing in this home, thanks to dual accordion glass doors leading onto a covered stone terrace with an outdoor fireplace, overlooking an expansive backyard.
- A 10' center island anchors the kitchen with custom cabinets, a 60" fridge, and Jenn-Air 48" range.
- Entertaining is a breeze thanks to a practical butler's pantry serving area that leads into the dining room.
- Whether relaxing in the keeping room or great room, it's sure to be an enjoyable experience. The keeping room elicits casual vibes, while more elegance abounds in the great room with a custom plaster fireplace.
- An upstairs owner's retreat is tucked away from the rest of the home, creating the perfect escape. A hip-vault ceiling with v-groove trim detail accents the bedroom, there are opposing dual vanities, freestanding tub, and large walk-in shower with designer tile in the bath, PLUS the WIC is massive with a center island.
- A friend's entry leads into the mudroom with a custom drop zone and dog feeding station with pot filler.
- In-laws and friends alike can make themselves at home in the main floor guest suite with a private bath.
- Separated from the main upper level, a flex space offers the perfect opportunities to have a media room, home gym, kid's playroom, or some combination thereof. There is even a SUPER FUN kid's nook space.
- All secondary bedrooms offer hardwoods, attached baths, and walk-in closets.
- A motor court and oversized two-car garage ensure plenty of storage and parking space.

PIKE

PROPERTIES

PHONE
NO 704 332 3332

FAX
NO 704 973 0000

1401 CENTRAL AVE.
SUITE 200-G
CLT, NC 28205

PIKEPROPERTIES.COM

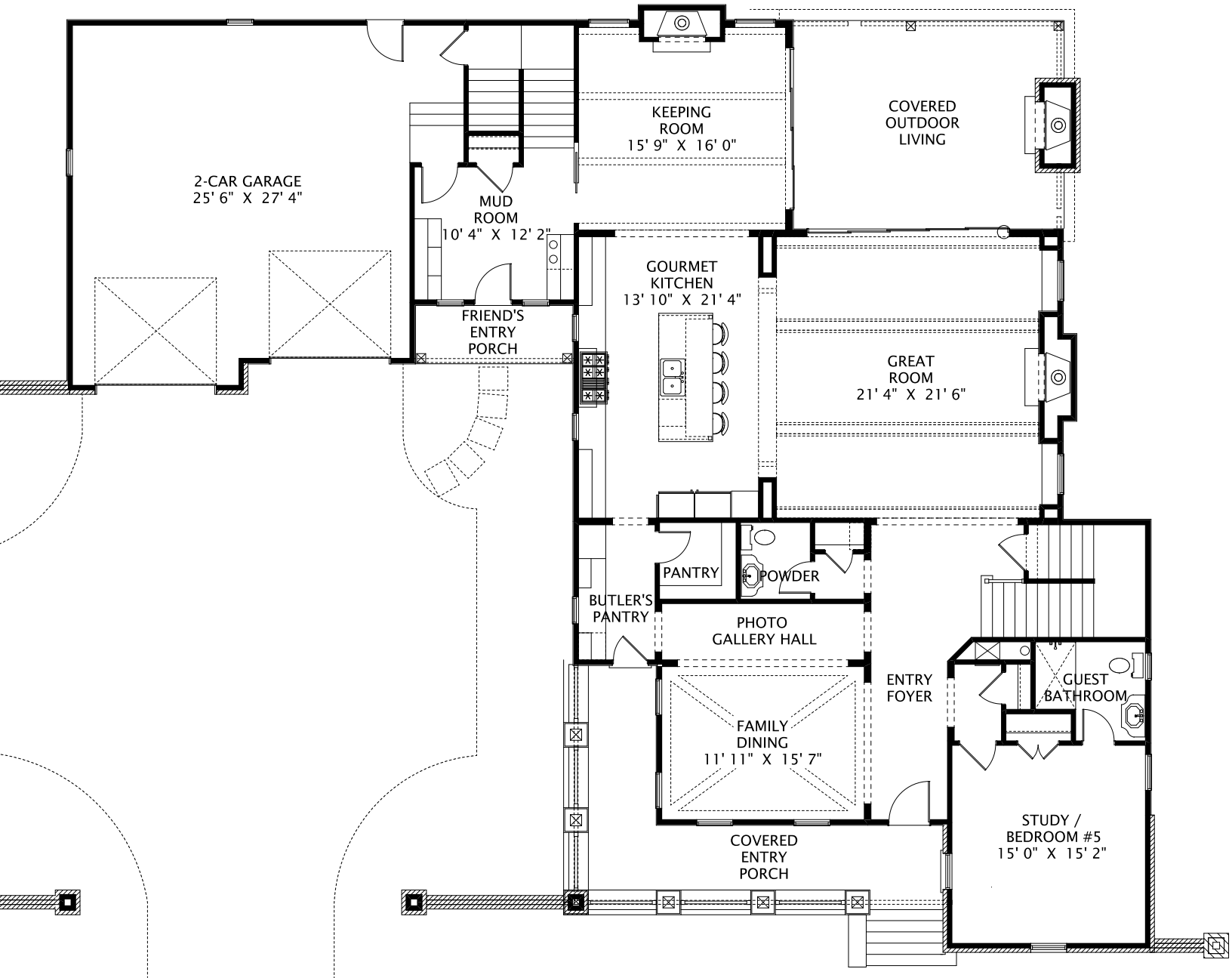


1106 ROSEWOOD CIR.

5 BEDROOMS | 4.5+ BATHROOMS | 4,950 SQ FT



PIKE
PROPERTIES



PIKE
PROPERTIES

PHONE
NO 704 332 3332

FAX
NO 704 973 0000

1401 CENTRAL AVE.
SUITE 200-G
CLT, NC 28205

PIKEPROPERTIES.COM

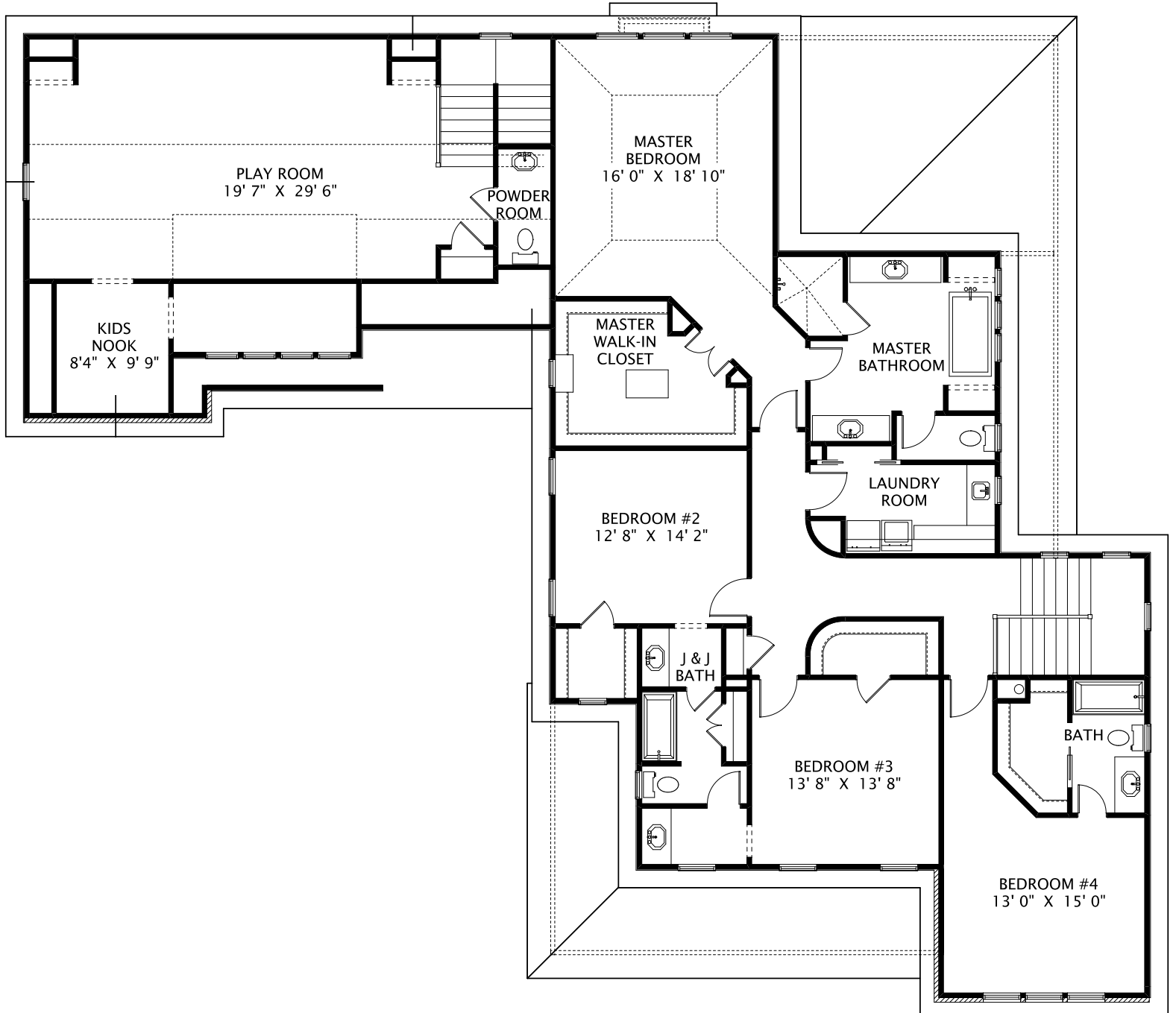


1106 ROSEWOOD CIR.

5 BEDROOMS | 4.5+ BATHROOMS | 4,950 SQ FT



PIKE
PROPERTIES



PIKE
PROPERTIES

PHONE
NO 704 332 3332

FAX
NO 704 973 0000

1401 CENTRAL AVE.
SUITE 200-G
CLT, NC 28205

PIKEPROPERTIES.COM

